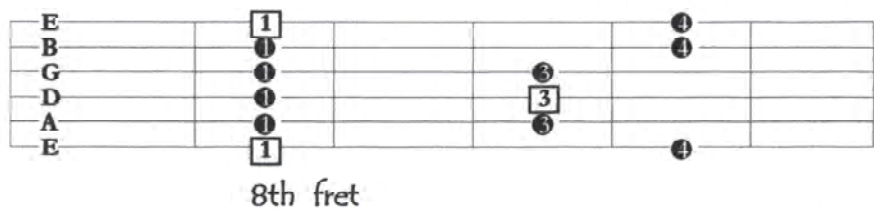


Inside the Box

minor ^ pentatonic

Here's a minor pentatonic scale pattern up on the 8th fret ..
 this pattern (and the following licks) can be played in different keys anywhere on the neck !



the numbers indicate left hand fingerings:
 1=index; 2=middle; 3=ring; 4=pinky ..
 the squares indicate roots - in this case 'C' ..

Get familiar with this scale pattern (if you aren't already !) .. practice with alternate picking ..
 The following licks all fall within the C minor pentatonic "box" ..

Repeating-style licks: (.. great for building energy in a solo ..)

#1

Cm

1/3C VIII *
P = pull-off

#2

1/3C VIII
P

* Note: 1/3C VIII means to barre the top two strings with your index finger on the 8th fret !

#3

Cm

H = hammer-on

#4

Full = whole step (two fret) bend



#5 (.. the "Page" turner)

Cm

1/3C VIII

P P P P P P P

6 6 6 6

Full (vibrato)

V V V V ...

11 8 8 11 8 8 11 8 8 11 8 8 11 8 8 11 8 8 11 8 8 11 8 8

TAB

#6

Cm

#7

1/3C VIII

Full Full Full Full

3 3 3 3

2/4

1/3C VIII

Full P Full P

5 5

V V V V ...

Full 8 8 Full 8 8 Full 8 8 Full 8 8

10 10 10 10

Full 8 11 8 Full 8 11 8

10 10

TAB

Sequences: (.. are repetitions of a musical motive, each beginning on a different pitch)

#8 (.. the "2's")

Cm

3

P H

V V V V ...

3 3 3 3

Full (vibrato)

V Full

8 8 10 8 10 10 10 8 8 11 8 11 11 8

10 8 10 10 10 10 10 8 8 11 8 11 11 8

TAB

remember: ascending slurs are "hammer-ons"; descending slurs are "pull-offs"; the "H" and "P" are not commonly used ..

Important point: when holding a bend (as in the last bar of #5 and #8), it is important to support the bent note (and vibrato) with as many fretting hand fingers as possible !

#9 (.. the "3's")

Cm

Musical notation for exercise #9, featuring a treble clef, 4/4 time signature, and Cm key signature. The melody consists of eighth notes with accents and slurs, marked with "P H P" and "6". The bass line shows fret numbers 8, 11, 8, 11, 8, 10, 8, 10, 8, 10, 8, 10, 8, 10, 8, 11, 8.

#10 (.. the "4's")

Cm

Musical notation for exercise #10, featuring a treble clef, 4/4 time signature, and Cm key signature. The melody consists of eighth notes with accents and slurs, marked with "H" and "V". The bass line shows fret numbers 8, 11, 8, 10, 11, 8, 10, 8, 10, 8, 10, 8, 10, 8, 10, 8, 11.

#11 (.. the "5's") (the '5 against 4' feel has a cascading "waterfall" effect ..)

Cm

Musical notation for exercise #11, featuring a treble clef, 4/4 time signature, and Cm key signature. The melody consists of eighth notes with accents and slurs, marked with "P" and "V". The bass line shows fret numbers 8, 11, 8, 10, 8, 10, 8, 10, 8, 10, 8, 10, 8, 10, 8, 10, 8, 11, 8.

Note(s) ... #'s 8-11 can be played ascending or descending ... and #'s 8 & 9 can be played as triplets or sextuplets !

